

## Setting Up Internet Connection for Windows PC

### Step 1.

Contact LDS Technology Support at [support@lds.co.uk](mailto:support@lds.co.uk)

Tell them the Room Number and they will reply to you with the specific IP Address required for Internet access in that room. The format of the address will be 192.168.168.XXX where XXX is a specific number e.g. 192.168.168.44

Keep this number to hand, you will also need the following numbers

Subnet Mask – 255.255.255.0

Default Gateway – 192.168.168.168

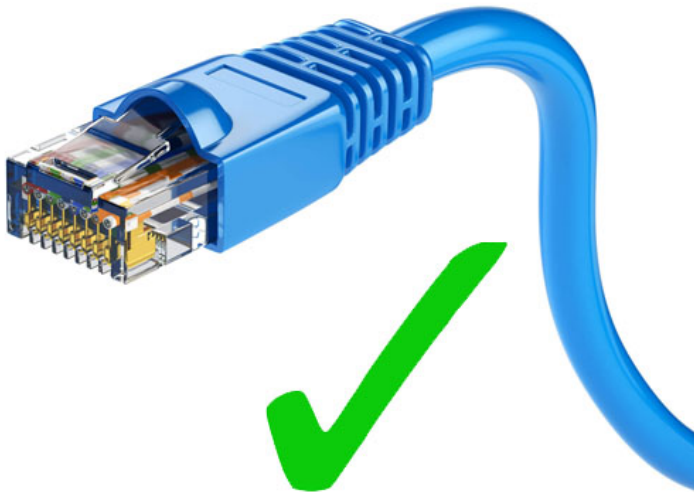
Preferred DNS Server – 8.8.8.8

Alternate DNS Server – 8.8.4.4

### Step 2.

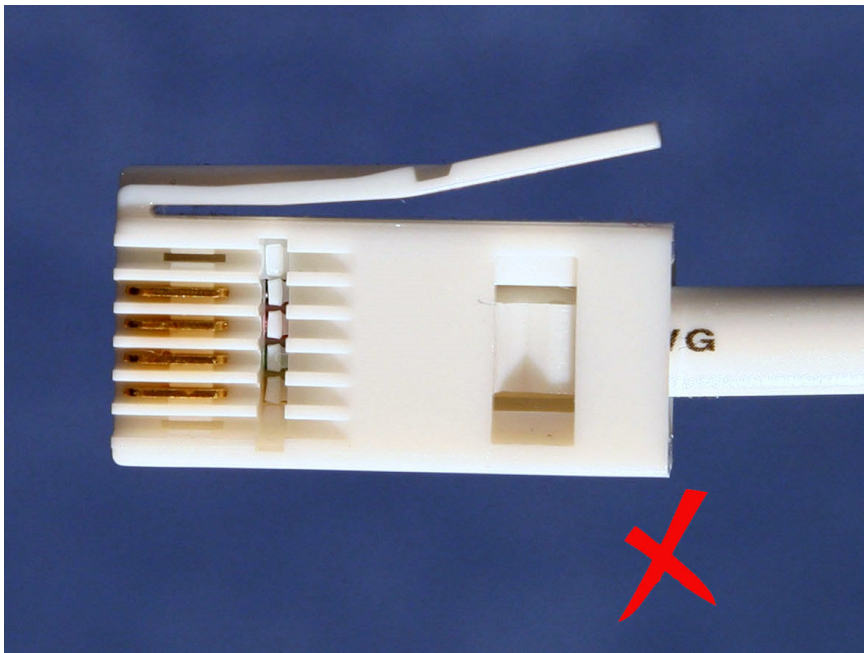
Ensure you have an RJ45 Lan / Ethernet Cable with connectors that look like this

### **RJ45 Connector**



TechTerms.com

DO NOT USE A PHONE CABLE LIKE THIS



Step 3.

Locate the RJ45 Network Socket in the room, usually on the skirting board, like this.

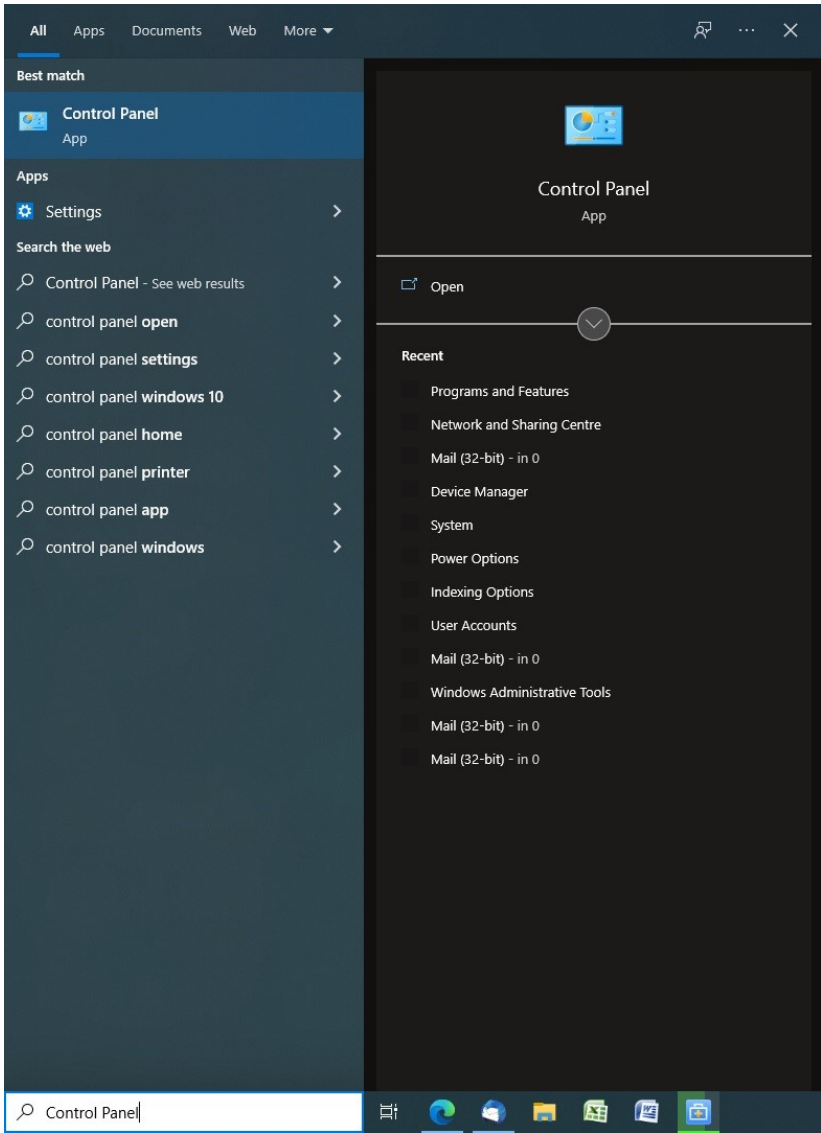


IF YOU FIND A PHONE SOCKET LIKE THIS ( IT MAY ONLY HAVE THE LOWER SOCKET ), DO NOT USE IT.



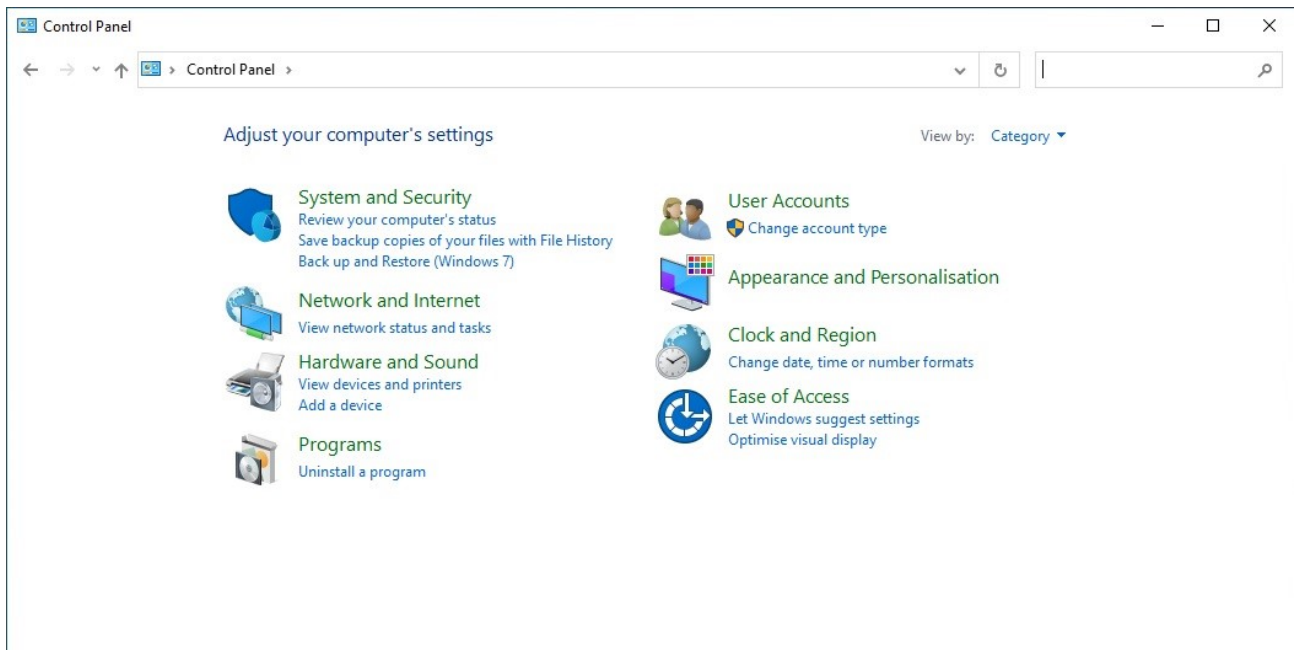
Step 4.

On your PC, click in the search box and type **Control Panel**



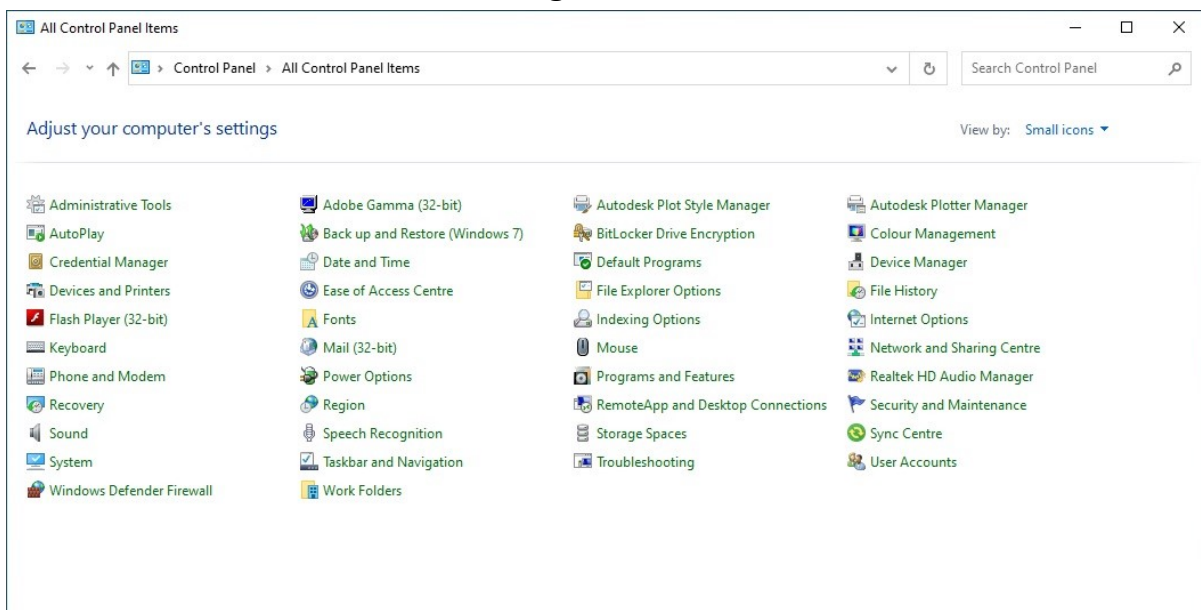
Open Control Panel

## If you see Category View like this

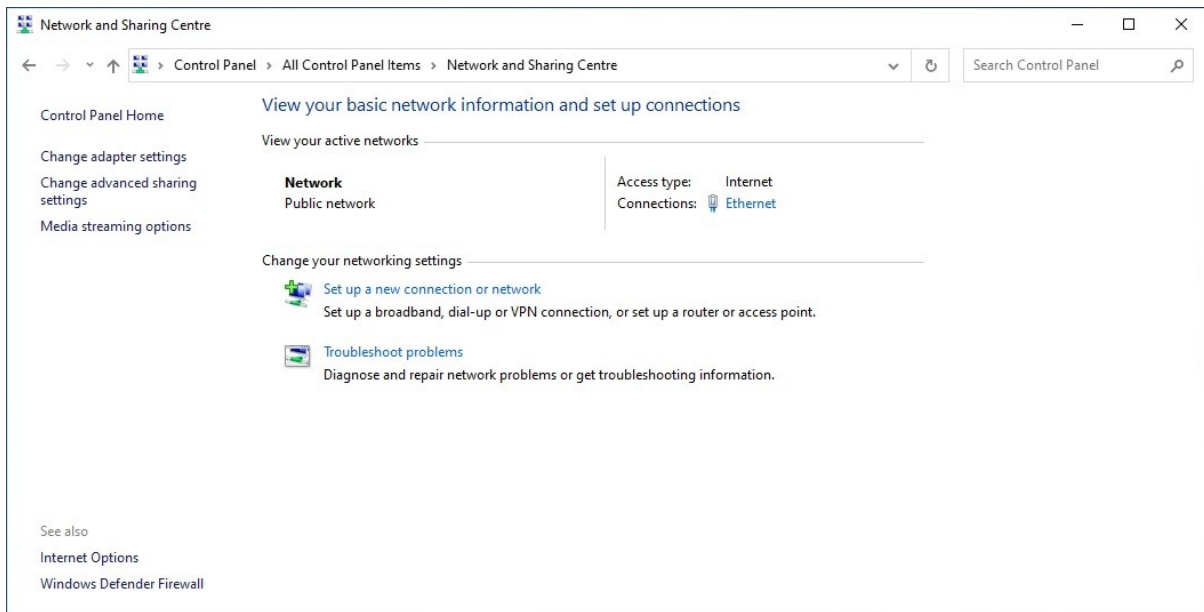


Click on **View by Category**, top right and select **Small Icons**

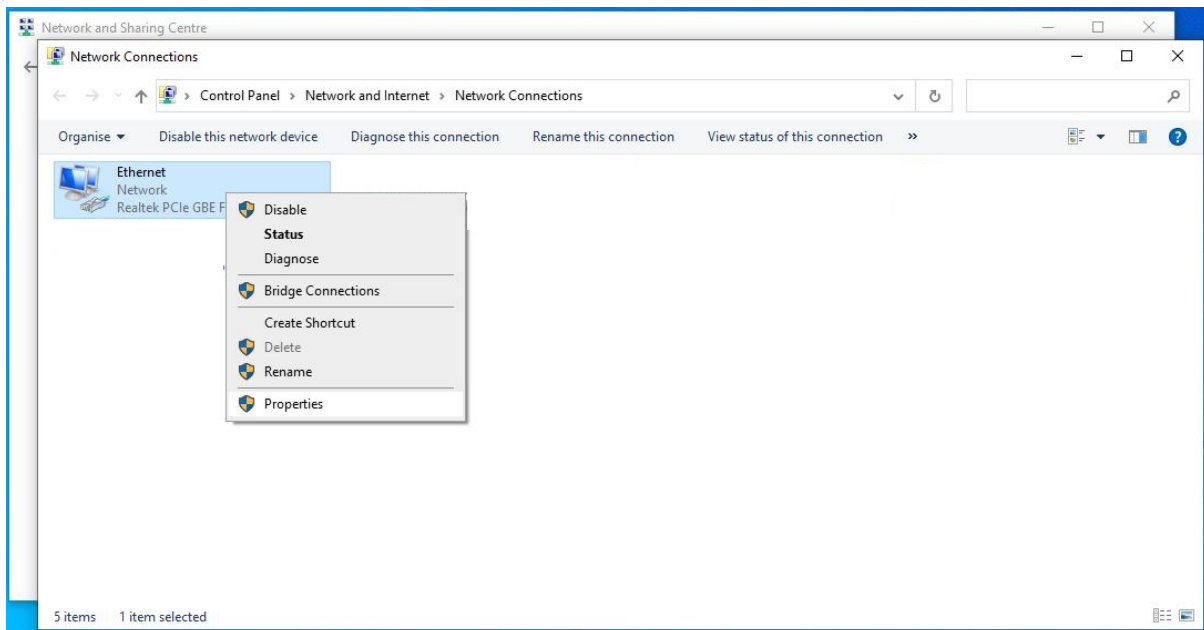
Find and select **Network and Sharing Centre**



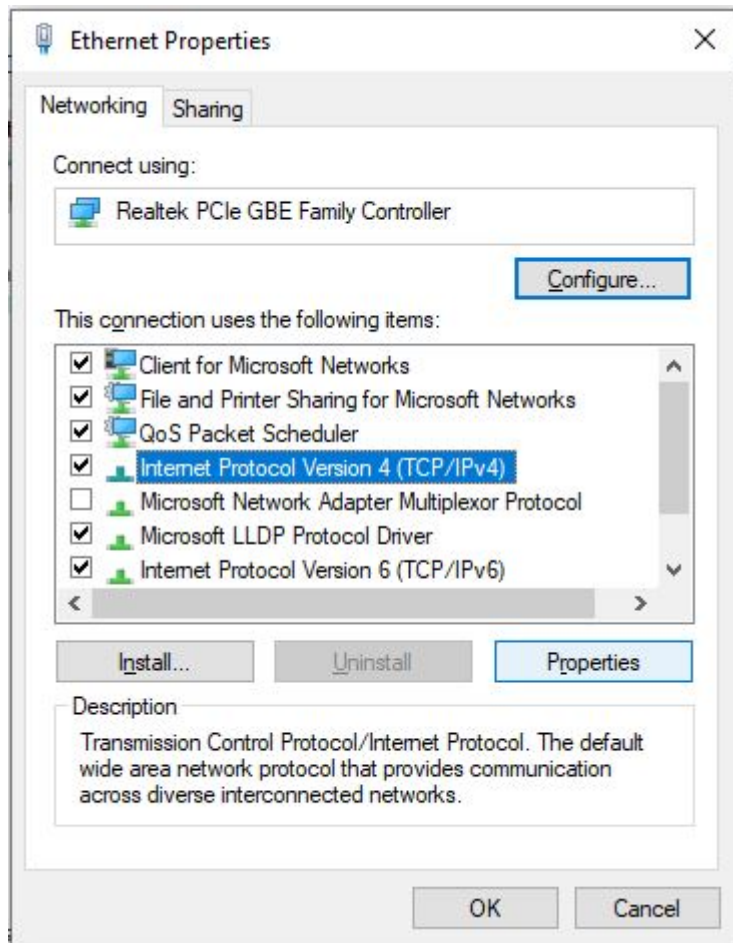
## In the list on the left, select **Change Adapter Settings**



## Right Click on your Ethernet Adaptor Icon and Select **Properties**

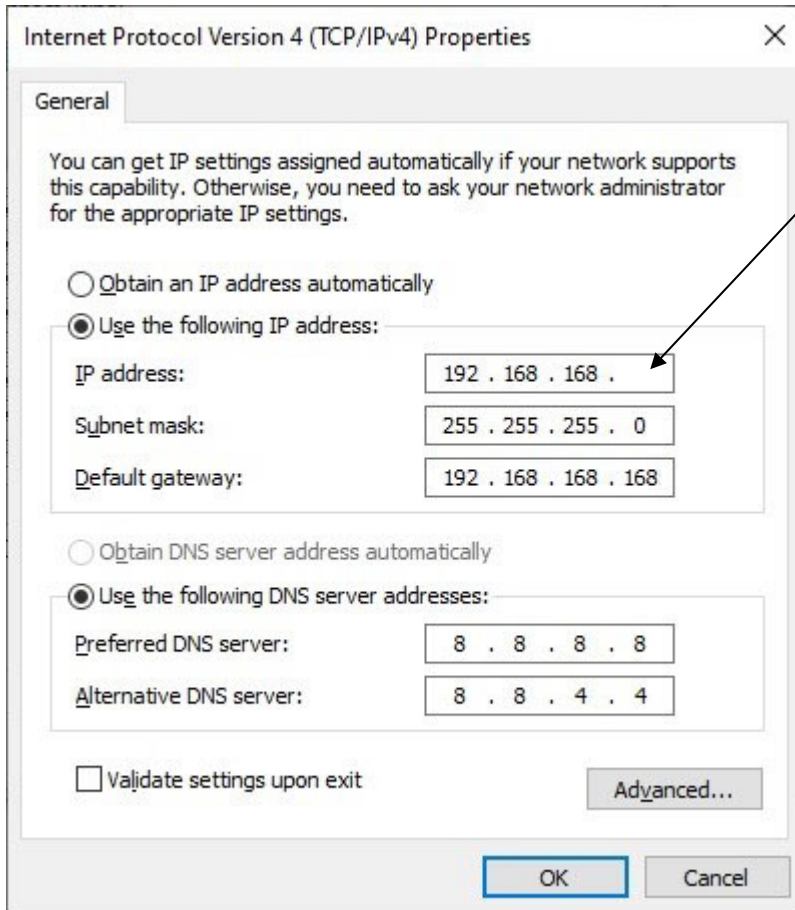


## Select / Open Internet Protocol Version 4 (TCP/IPv4)



Enter the IP Address you were given by LDS Support along with the other details ( Subnet, Gateway etc )

Your IP Address Goes Here



Click **OK**

Close all other windows.

Connect the RJ45 Ethernet Lan cable from your PC to the LAN Socket.